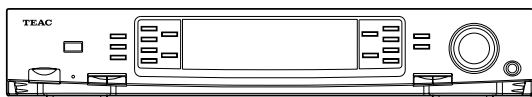


TEAC



SERVICE MANUAL

PLS-75D

HOME THEATER SYSTEM

CONTENTS

1 SPECIFICATIONS	2
2 EXPLODED VIEWS AND PARTS LIST	3
3 PC BOARDS AND PARTS LIST	5
4 INCLUDED ACCESSORIES	11

目次

1 仕様	2
2 分解図とパーツリスト	3
3 基板図とパーツリスト	5
4 付属品	11

NOTES

- PC boards shown are viewed from parts side.
- Parts marked with * require longer delivery time.
- The parts with no reference number or no parts number in the exploded views are not supplied.
- As regards the resistors and capacitors, refer to the circuit diagrams contained in this manual.
- △ Parts marked with this sign are safety critical components. They must be replaced with identical components - refer to the appropriate parts list and ensure exact replacement.
- Parts of [] mark can be used only with the version designated.
[J]: JAPAN [E]: EUROPE

注 意

- プリント基板図は部品面を示しています。
- *印の部品は納期が若干かかります。
あらかじめご了承ください。
- 分解図に部番のない部品および品番のない部品は供給できません。
- 標準の抵抗、コンデンサーは省略してあります。
回路図を参照してください。
- △印は安全重要部品です。
交換する時は必ず指定の部品を使用してください。
- 仕向先
[J]: JAPAN [E]: EUROPE

1 SPECIFICATIONS

仕 様

Power Output:

Front	2 x 30W
Surround	2 x 30W
Center	30W
Subwoofer	50W

Total Harmonic Distortion < 0.9%

Frequency Response 40Hz – 20kHz, ±3dB

Surround Level -15dB ~ +10dB to main output level

Center Level -15dB ~ +10dB to main output level

Subwoofer Level -15dB ~ +10dB to main output level

- Improvements may result in specification or feature changes without notice.

本体

定格出力

ステレオモード (サラウンドOFF)

..... 32W+32W (100Hz~20kHz, 10%THD, 8Ω)

サラウンドモード

フロント 30W+30W (100Hz~20kHz, 0.9%THD, 8Ω)

センター 30W (150Hz~6kHz, 0.9%THD, 8Ω)

サラウンド 30W+30W (150Hz~6kHz, 0.9%THD, 8Ω)

サブウーファー 40W (40Hz~250Hz, 0.9%THD, 4Ω)

周波数特性 40Hz~20kHz (±3dB)

SN比 65dB

入力感度/インピーダンス 350mV/22kΩ

出力レベル/インピーダンス 1V/10kΩ

定格消費電力 120W

外形寸法 (mm) 420(W) x 73(H) x 360(D)

質量 7.5kg

フロント/センター/サラウンドスピーカー

ウーファー 74mm

ツイーター 44mm

インピーダンス 8Ω

最大入力 30W

外形寸法 (W x H x D) 248mm x 108mm x 101mm

質量 0.9kg

サブウーファー

サブウーファー 165mm

インピーダンス 4Ω

最大入力 50W

外形寸法 (W x H x D) 200mm x 355mm x 318mm

質量 5kg

付属品

リモコン (RC-748)

リモコン用乾電池 (単3) x 2本

スピーカーコード x 6本

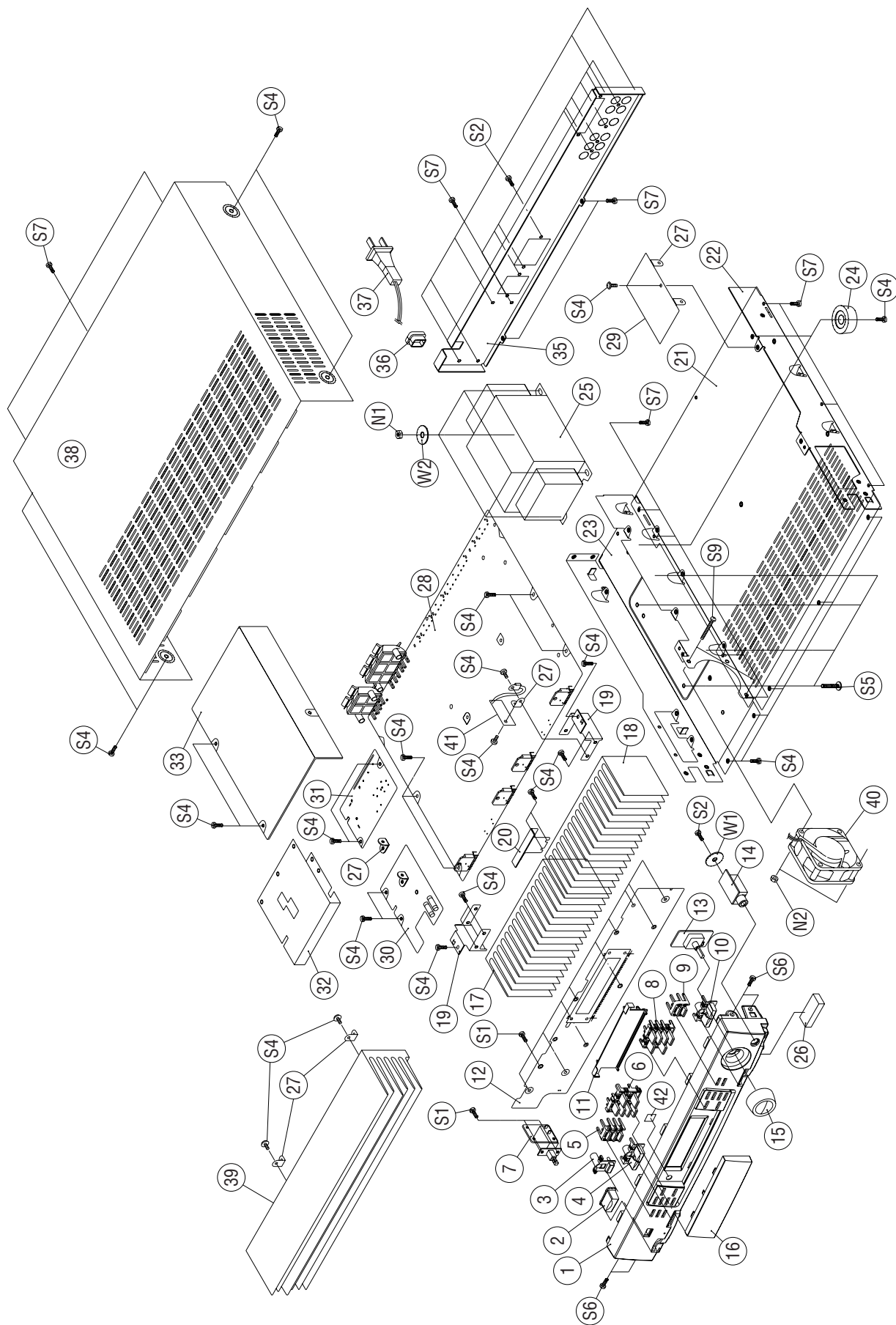
取扱説明書

保証書

- 仕様および外観は、改善のため予告なく変更することがあります。

2 EXPLODED VIEWS AND PARTS LIST

分解図とパーツリスト



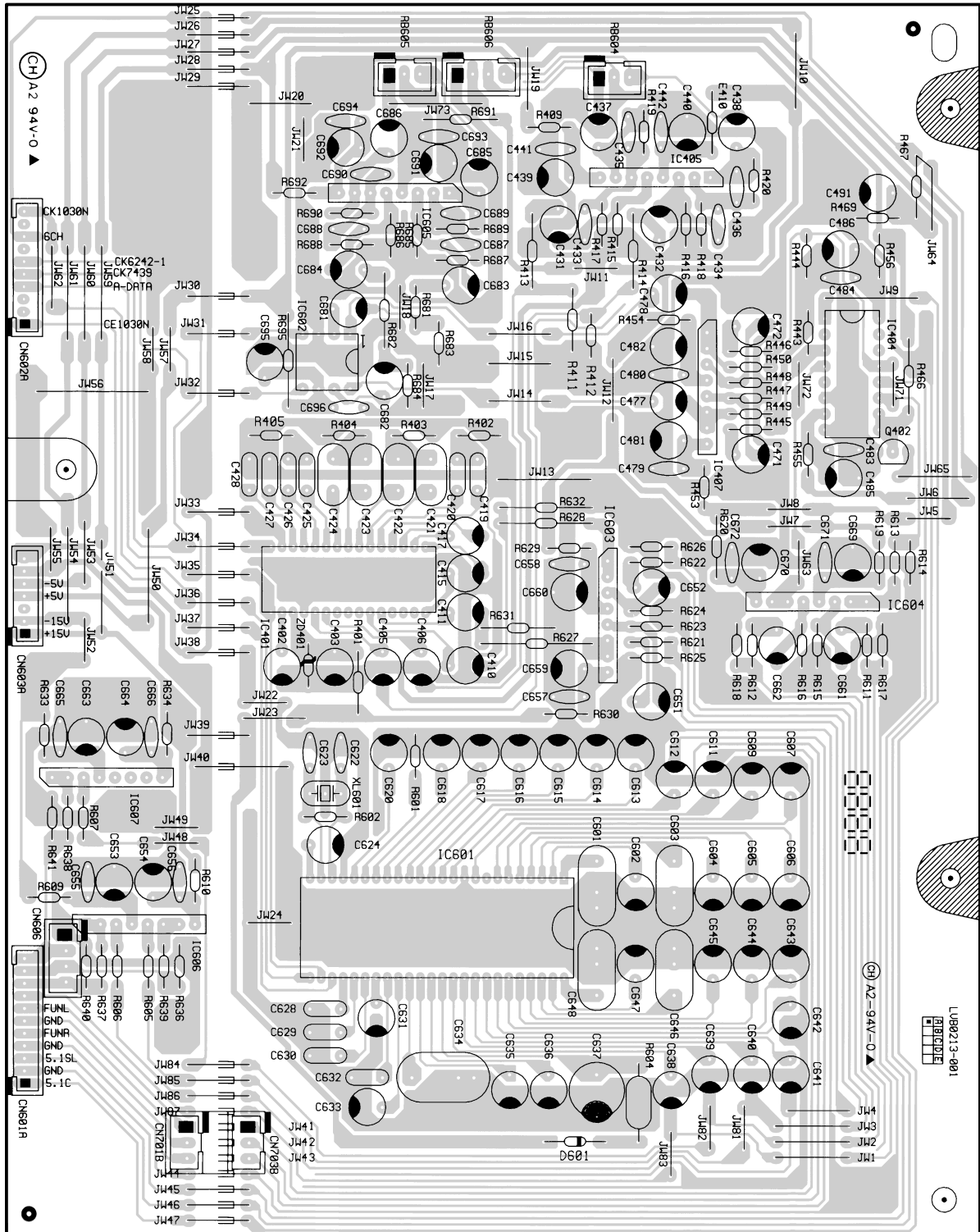
PARTS LIST

REF.NO.	PARTS NO.	DESCRIPTION	REF.NO.	PARTS NO.	DESCRIPTION
1	*9A08288600	FRONT CAB [E]	38	*9A08290900	COVER CAB [E]
	*9A08288610	FRONT CAB [J]		*9A08319500	COVER CAB [J]
2	*9A08289000	POWER KNOB [E]	39	*9A08290600	HEAT SINK [E]
	9A08289010	POWER KNOB [J]	40	*9A08290500	DC FAN, 12V 0.1A [E]
3	*9A08289300	SOURCE KNOB [E]	41	*9A08308000	TEMP PCB ASSY(HI) [E]
	9A08289310	SOURCE KNOB [J]	42	*9A08288400	DP SENSOR LIGHT(RED)
4	*9A08289200	ADJ KNOB [E]	N1	*9A07446100	NUT, @14X3.5
	9A08289210	ADJ KNOB [J]	N2	*9A08292200	NUT, D3.0XB5.5XH2.2 [E]
5	*9A08288800	SLEEP KNOB [E]	S1	*9A08291700	SCREW, T3.0X1.27P-2RHXL10
	9A08288810	SLEEP KNOB [J]	S2	*9A07445100	SCREW, T3.0XL10.0(BLK)
6	*9A08288700	EQ KNOB [E]	S3	*9A08292000	SCREW, M3.0XL10.0(BLK)
	9A08288710	EQ KNOB [J]	S4	*9A08291900	SCREW, M3.0XL6.0(BLK)
7	*9A08295800	PUSH SW PCB ASSY [E]	S5	*9A08291500	SCREW, M3.5X0.6PXL10.0
	*9A08295810	PUSH SW PCB ASSY [J]	S6	*9A08292100	SCREW, M3.0XL6.0
8	*9A08289400	PROLOGIC KNOB [E]	S7	*9A07445500	SCREW, M3X0.5PX6
	*9A08289410	PROLOGIC KNOB [J]	S8	*9A07453100	SCREW, T3.0XL8.0
9	*9A08289500	PRESET KNOB [E]	S9	*9A08291400	SCREW, M3.0X0.5PXL30.0
	9A08289510	PRESET KNOB [J]	W1	*9A08292400	WASHER
10	*9A08289100	BAL & TNR KNOB [E]	W2	*9A08292300	WASHER, FIB
	9A08289110	BAL & TNR KNOB [J]	F901	△ *9A07453400	FUSE, 2A 250V SLOW [E]
11	*9A08296200	VFD HOLDER	F901	△ *9A08320100	FUSE, 6A 125V SLOW [J]
12	*9A08295600	LCD PCB ASSY	F903, 904	△ *9A07453400	FUSE, 2A 250V SLOW [E]
13	*9A08295700	VR PCB ASSY	F903, 904	△ *9A08320200	FUSE, 2A 250V SLOW [J]
14	*9A08295900	PHONE JACK PCB ASSY	IC501-506	*9A08290700	MICA, 26.0X22.0
15	*9A08288900	VOL KNOB [E]	LD251	*9A08294000	LED, 2D1AX5D1A, 5.6D1A
	9A08288910	VOL KNOB [J]		*9A08290200	SPK BOX [E]
16	*9A08289600	DISPLAY WINDOW [E]		*9A08290210	SPK BOX [J]
	9A08289610	DISPLAY WINDOW [J]		*9A08290300	SPK ASSY [E]
17	*9A08319400	HEAT SINK AL T=10.0 [J]		*9A08290310	SPK ASSY [J]
18	*9A08319300	HEAT SINK AL T=10.0 [J]			
19	*9A08291300	HEAT SINK BRACKET			
20	*9A08319700	HEAT SINK BRACKET [J]			
21	*9A08291000	BOTTOM CAB			
22	*9A08291100	BOTTOM RIGHT			
23	*9A08291200	BOTTOM LEFT			
24	*9A08290100	FOOT, H10.4XOD20X1D3.4			
25	△ *9A08294100	PWR TRANS, 230V [E]			
	△ 9A08320300	PWR TRANS, 100V [J]			
26	*9A08293000	RUBBER, 34.5X8.5X10.0			
27	*9A07441200	HEAT SINK BRACKET			
28	*9A08288000	MAIN PCB ASSY [E]			
	*9A08288010	MAIN PCB ASSY [J]			
29	*9A08288300	SIMULATED PCB ASSY			
30	*9A08307800	POWER PCB ASSY 230V [E]			
	*9A08307810	POWER PCB ASSY 100V [J]			
31	*9A08307900	AC POWER PCB ASSY [E]			
	*9A08307910	AC POWER PCB ASSY [J]			
32	*9A08288500	PVC PLATE			
33	*9A08288100	PROLOGIC PCB ASSY			
35	*9A08291600	BACK CAB [E]			
	*9A08319600	BACK CAB [J]			
36	△ *9A08289700	AC LINE BUSHING			
37	△ *9A08294200	LINE CORD, VDE [E]			
	△ *9A07441300	LINE CORD, T-MARK [J]			

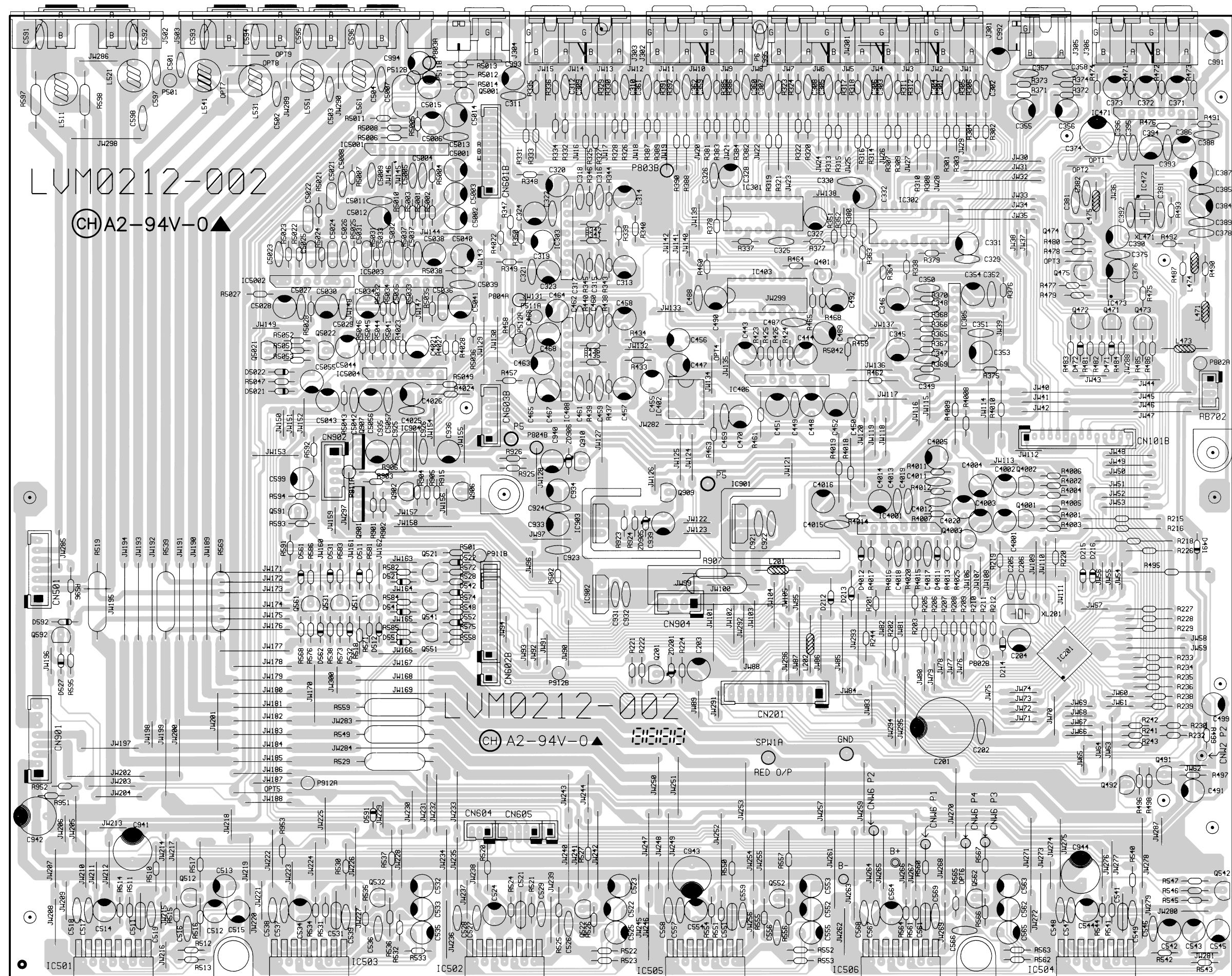
3 PC BOARDS AND PARTS LIST

基板図とパーツリスト

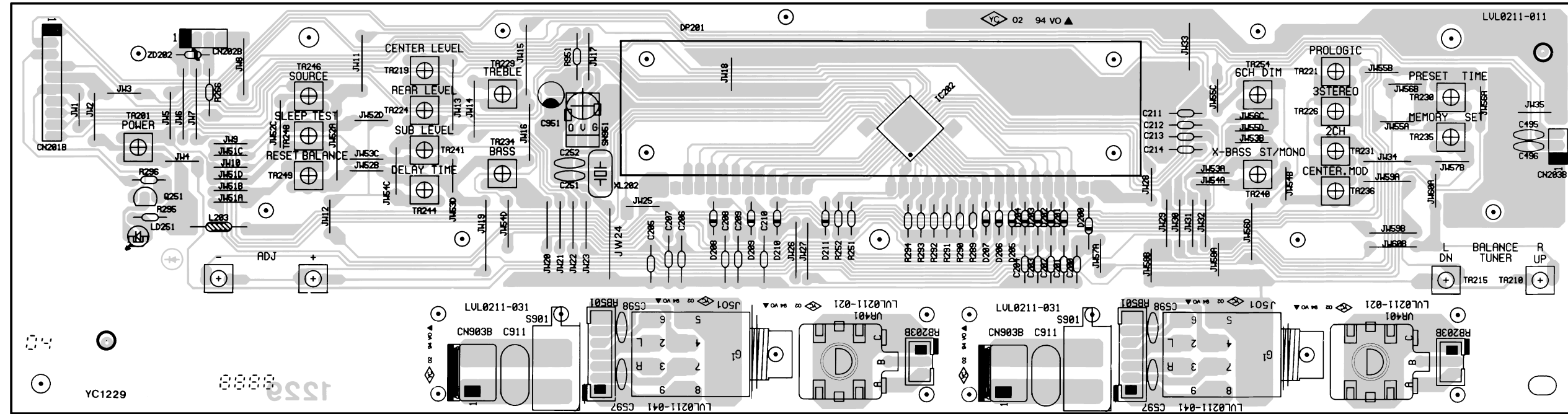
PROLOGIC PCB



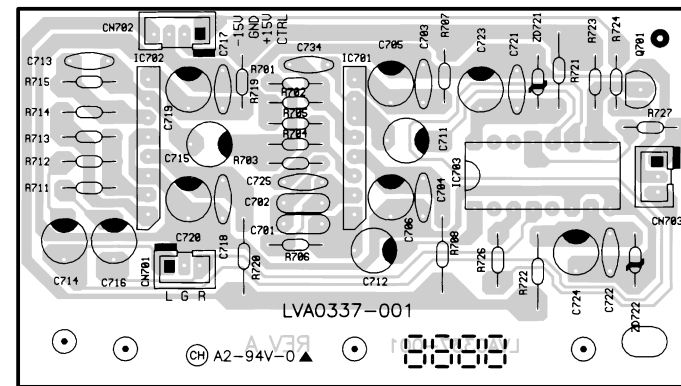
MAIN PCB



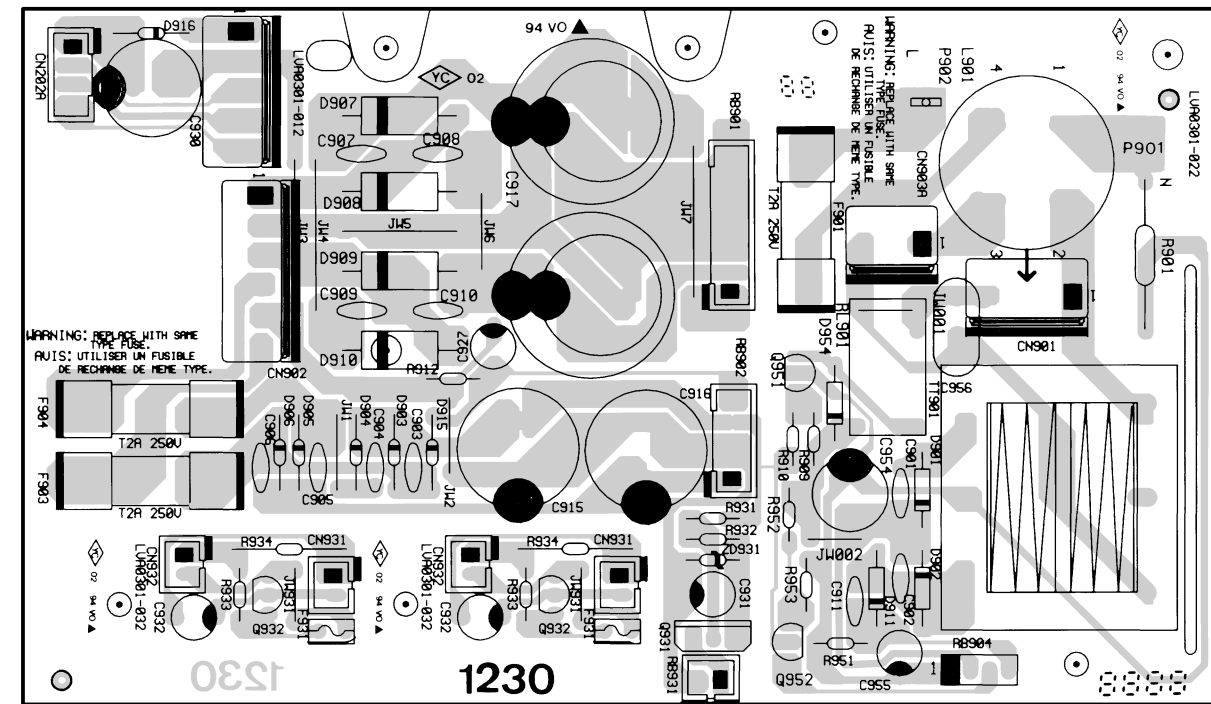
LCD PCB (LCD PCB/VR PCB/PHONE JACK PCB/PUSH SW PCB)



SIMULATED PCB



POWER PCB (POWER PCB/AC POWER PCB/TEMP PCB)



PROLOGIC PCB ASSY

REF. NO.	PARTS NO.	DESCRIPTION
	*9A08288100	PROLOGIC PCB ASSY
	*9A08306600	PROLOGIC PCB
CN601A	9A08305700	CONNECTOR, TUC-P11X-B1
CN602A	9A08305600	CONNECTOR, TUC-P10X-B1
CN603A	9A08305500	CONNECTOR, TUC-P7X-B1
CN701B	9A07466100	CONNECTOR, B3B-XH-A 3PIN
CN703B	9A07466100	CONNECTOR, B3B-XH-A 3PIN
D601	9A07449400	DIODE, 1N4148
IC401	9A08306100	IC, TDA7439
IC404	9A07462400	IC, TC4052BP
IC405, 407	9A07462800	IC, M5218AL
IC601	9A08306000	IC, LV1030N
IC602	9A08302300	IC, M62429P
IC603-605	9A07462800	IC, M5218AL
Q402	9A07449500	TR, 2SC945P
R604	△ 9A08307500	R, 82 OHM 1/2W
XL601	9A08305800	RES, 8MHZ
ZD401	9A08307700	DIODE, ZENER 8.5-8.9V 0.5W

MAIN PCB ASSY

REF. NO.	PARTS NO.	DESCRIPTION
	*9A08288000	MAIN PCB ASSY [E]
	*9A08288010	MAIN PCB ASSY [J]
	*9A08303000	MAIN PCB
	*9A08299400	PVC PLATE, L5.0XW5.0XT0.4
	*9A07452400	SLEEVEING, OD2.0XID1.0XLL10
	*9A08300400	SLEEVEING
	*9A07441200	HEAT SINK BRACKET
C597, 598	△ 9A07465900	R, 680 OHM 1/2W
CN201	9A08299500	CONNECTOR, B10B-XH-A 10PIN
CN501	9A07451400	CONNECTOR, B7B-XH-A 7PIN
CN601B	9A08299900	CONNECTOR, TUC-P11P-B1
CN602B	9A08299800	CONNECTOR, TUC-P10P-B1
CN603B	9A08299700	CONNECTOR, TUC-P7P-B1
CN604	9A08300000	CONNECTOR, B3B-PH-K
CN605	9A08300100	CONNECTOR, JST
CN901	9A08299600	CONNECTOR, B8B-XH-A 8PIN
CN902	9A07451500	CONNECTOR, B5B-XH-A 5PIN
D212-216	9A07449400	DIODE, 1N4148
D491	9A07449400	DIODE, 1N4148
D511, 512	9A07449400	DIODE, 1N4148
D521, 522	9A07449400	DIODE, 1N4148
D527	9A07449400	DIODE, 1N4148
D531, 532	9A07449400	DIODE, 1N4148
D541, 542	9A07449400	DIODE, 1N4148
D551, 552	9A07449400	DIODE, 1N4148
D562	9A07449400	DIODE, 1N4148
D591, 592	9A07449400	DIODE, 1N4148
IC201	9A08301300	IC, TC9909
IC301, 302	9A05632100	IC, TC4051BP
IC303, 305	9A07462800	IC, M5218AL

MAIN PCB ASSY

REF. NO.	PARTS NO.	DESCRIPTION
IC402	9A08302300	IC, M62429P
IC403	9A07462400	IC, TC4052BP
IC406, 408	9A07462800	IC, M5218AL
IC501-506	9A07468300	IC, TDA7295
IC901	△ 9A07463000	IC, MC7806ACT
IC903	*9A07452600	HEAT SINK
IC903	*9A07445500	SCREW, M3X0.5PX6
IC903	△ 9A07463100	IC, REGULATOR 15V 1A
IC904	△ 9A07463200	IC, 7915
IC5001	9A07462800	IC, M5218AL
IC5002	9A07462800	IC, M5218AL
IC5003	9A07462800	IC, M5218AL
IC5004	9A07462800	IC, M5218AL
JW117	9A07449400	DIODE, 1N4148
J301	9A07452300	RCA JACK, RJ-1075-09-0300A
J302	9A08300200	RCA JACK
J305	9A07452200	RCA JACK, RJ-1060-09-0300A
J502	9A07452100	SPK JACK, 4P
J503	9A08300300	SPK JACK
L201, 202	9A08305300	CHOKER, 10UH
L511, 521	9A07464000	RF COIL, 1UH
L531, 541	9A07464000	RF COIL, 1UH
L551, 561	9A07464000	RF COIL, 1UH
Q201	9A07449600	TR, 2SA7330/P
Q401	9A07449500	TR, 2SC945P
Q491, 492	9A07449500	TR, 2SC945P
Q511, 512	9A07449500	TR, 2SC945P
Q521, 522	9A07449500	TR, 2SC945P
Q531, 532	9A07449500	TR, 2SC945P
Q541, 542	9A07449500	TR, 2SC945P
Q551, 552	9A07449500	TR, 2SC945P
Q561, 562	9A07449500	TR, 2SC945P
Q591, 592	9A07449600	TR, 2SA7330/P
Q901	△ 9A07463800	TR, 2SB772P/Q
Q902, 909	9A07449500	TR, 2SC945P
Q906, 910	9A07449600	TR, 2SA7330/P
Q907	△ 9A07463500	TR, 2SD882P
Q5021	9A07449500	TR, 2SC945P [J]
Q5022	9A07449500	TR, 2SC945P [J]
R519, 529	△ 9A08301200	R, 0.22 OHM 2W
R539, 549	△ 9A08301200	R, 0.22 OHM 2W
R559, 569	△ 9A08301200	R, 0.22 OHM 2W
R907	△ 9A08301100	R, 68 OHM 1W
XL201	9A08300500	CRYSTAL, 4.194304MHZ
ZD201	9A08305200	DIODE, ZENER 4.4-4.6V 0.5W
ZD905, 906	9A07461800	DIODE, ZENER 6.0-6.3V 0.5W

LCD PCB ASSY

REF. NO.	PARTS NO.	DESCRIPTION
	*9A08295600	LCD PCB ASSY
	*9A08298500	LCD PCB
	*9A08296200	VFD HOLDER
CN203B	9A08297400	FLAT CABLE, 3WIRE 120MM
D200-211	9A07449400	DIODE, 1N4148
DP201	9A08296500	VACUUM FLUORESCENT DISPLAY
IC202	9A08296700	IC, MN12510F
Q251	9A07449500	TR, 2SC945P
SN951	9A08296800	IRT SENSOR
TA201, 219	9A06200100	SW, TACT
TA209, 210	9A06200100	SW, TACT
TA214, 215	9A06200100	SW, TACT
TA221, 224	9A06200100	SW, TACT
TA226, 229	9A06200100	SW, TACT
TA230, 231	9A06200100	SW, TACT
TA234, 235	9A06200100	SW, TACT
TA236, 240	9A06200100	SW, TACT
TA241, 244	9A06200100	SW, TACT
TA246, 248	9A06200100	SW, TACT
TA249, 254	9A06200100	SW, TACT
XL202	9A08296400	CRYSTAL
ZD202	9A08299000	DIODE, ZENER 7.3-7.7V 0.5W

VR PCB ASSY

REF. NO.	PARTS NO.	DESCRIPTION
	*9A08295700	VR PCB ASSY
VR401	9A08320700	R-ENCODER, EC16B24204

PHONE JACK PCB ASSY

REF. NO.	PARTS NO.	DESCRIPTION
	*9A08295900	PHONE JACK PCB ASSY
	9A08298200	PHONE JACK

PUSH SW PCB ASSY

REF. NO.	PARTS NO.	DESCRIPTION
	*9A08295800	PUSH SW PCB ASSY [E]
	*9A08295810	PUSH SW PCB ASSY [J]
	*9A08297600	PVC PLATE
	△ 9A08298000	R, 4.7M OHM 1/2W [E]
C911	△ 9A07464900	C, SAFE 0.01UF 20%
CN903B	9A08297700	CONNECTOR, 3PIN
S901	△ 9A08297900	SW, PUSH

SIMULATED PCB ASSY

REF. NO.	PARTS NO.	DESCRIPTION
	*9A08288300	SIMULATED PCB ASSY
	*9A08310400	SIMULATED PCB
	*9A07441200	HEAT SINK BRACKET
	*9A07445500	SCREW, M3X0.5PX6
CN701A	9A08300000	CONNECTOR, B3B-PH-K
CN702	9A08310300	CONNECTOR, B4B-PH-K
CN703A	9A08300000	CONNECTOR, B3B-PH-K
IC701, 702	9A07462800	IC, M5218AL
IC703	9A07462400	IC, TC4052BP
Q701	9A07449500	TR, 2SC945P
ZD721, 722	9A08310700	DIODE, ZENER 5.0-5.2V 0.5W

POWER PCB ASSY

REF. NO.	PARTS NO.	DESCRIPTION
	*9A08307800	POWER PCB ASSY 230V [E]
	*9A08307810	POWER PCB ASSY 100V [J]
	*9A08309800	POWER PCB
C915, 916	△ 9A07457400	C, ELECT 2200UF/35V
C917, 918	△ 9A08308300	C, ELECT 3300UF/50V
C927	△ 9A08303600	C, ELECT 22UF/25V 20%
C930	△ 9A08308400	C, ELECT 470UF/50V
CN202A	9A07466000	CONNECTOR, B4B-XH-A 4PIN
CN902	9A07451700	CONNECTOR, 6PIN CL3962WV0
CN904	9A08308200	CONNECTOR, 5PIN CL3962WV0
D903-906	△ 9A07461600	DIODE, 1N4001
D907-910	△ 9A07462200	DIODE, 1N5401
D915, 916	△ 9A07461600	DIODE, 1N4001
F903, 904	9A07451800	FUSE CLIP, 5D 5X20
Q931	9A07450400	TR, 2SC2001L [E]
R901	△ 9A08298000	R, 4.7M OHM 1/2W
ZD931	9A08310000	DIODE, ZENER 11.9-12.4V 0.5W[E]

AC POWER PCB ASSY

REF. NO.	PARTS NO.	DESCRIPTION
	*9A08307900	AC POWER PCB ASSY [E]
	*9A08307910	AC POWER PCB ASSY [J]
CN901	9A08308800	CONNECTOR, 4PIN CL3962WV0
CN903A	9A08308900	CONNECTOR, 3PIN CL3962WV0
F901	9A07451800	FUSE CLIP, 5D 5X20
LP901, 902	9A07465000	L PIN
L901	△ 9A08309000	AC FILTER, SC-02-20V [E]

TEMP PCB ASSY (Europe only)

REF. NO.	PARTS NO.	DESCRIPTION
	* 9A08308000	TEMP PCB ASSY (H1) [E]
	* 9A07441200	HEAT SINK BRACKET
	* 9A08291900	SCREW, M3.0XL6.0 (BLK)
CN931	9A08309400	CONNECTOR, 2PIN 2421P02V00
CN932	9A08309300	CONNECTOR, B2B-XH-A 2PIN
F931	* 9A08309500	SLEEVING, 0D2X1D1XL32
F931	9A08309700	POSISTOR, PTH9M04BH471TS2F
Q932	9A07450400	TR, 2SC2001L
R934	⚠ 9A08309600	FUSE RESTR, 0.22 OHM 1/2W

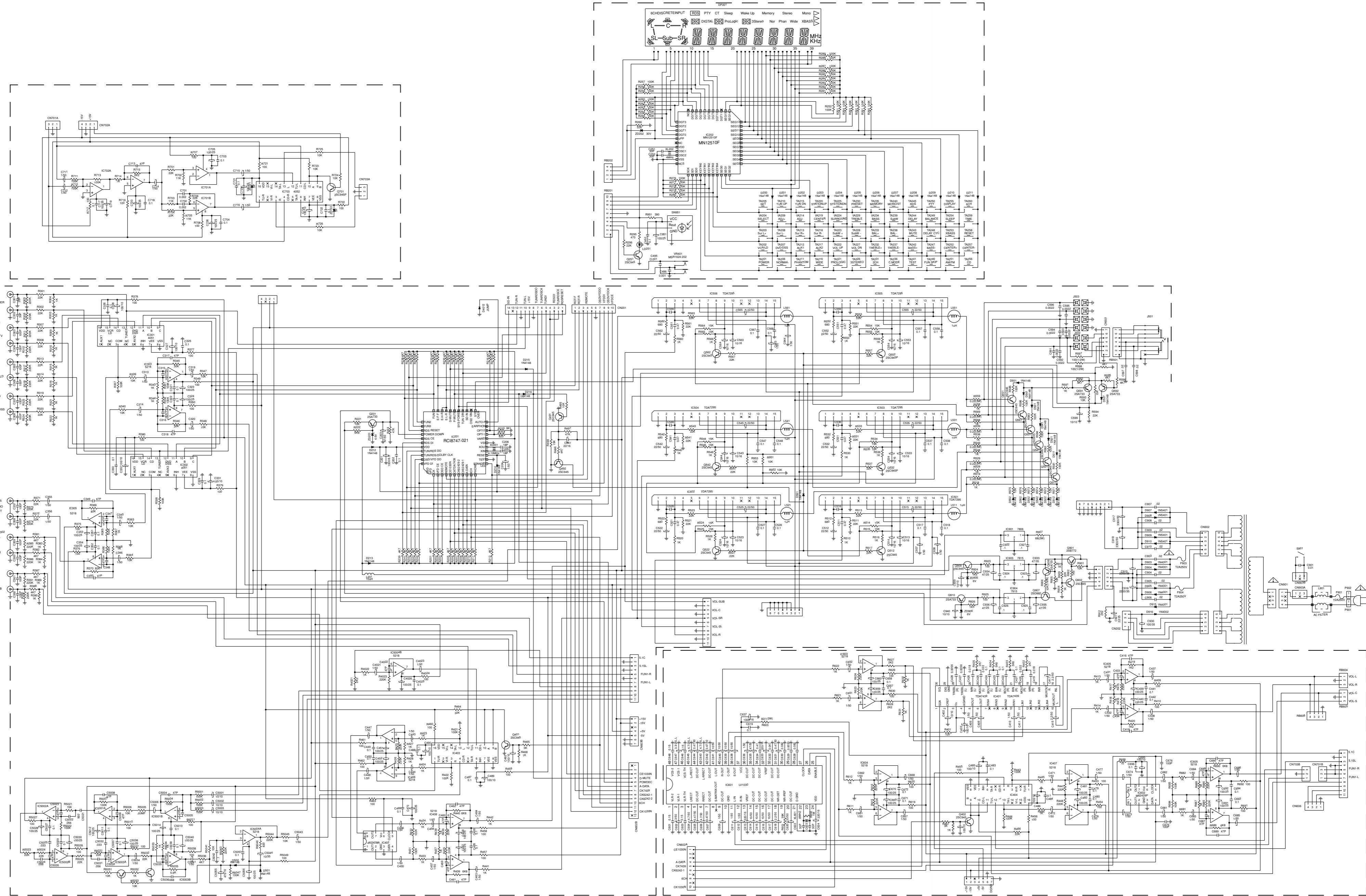
4 INCLUDED ACCESSORIES

付属品

INCLUDED ACCESSORIES

REF. NO.	PARTS NO.	DESCRIPTION	REMARKS
	* 9A07743800	OWNER' S MANUAL, J [J]	
	* 9A08295400	OWNER' S MANUAL, E/F/I/G/S[E]	
	* 9A08294600	REMOTE CONTROL AY [E]	
	* 9A08294610	REMOTE CONTROL AY [J]	
	* 9A08290400	BATTERY, TW-UM3E 1.5V	
	* 9A08294300	3 COND 2 WIRE 350MM (RED)	
	* 9A08294400	3 COND WIRE 220MM (BROWN)	
	* 9A08294500	3 COND WIRE 220MM (GRAY)	

A
B
C
D
E
F
G
H



INSTRUCTIONS FOR SERVICE PERSONNEL
 BEFORE RETURNING APPLIANCE TO THE CUSTOMER, MAKE LEAKAGE-CURRENT OR RESISTANCE MEASUREMENTS TO DETERMINE THAT EXPOSED PARTS ARE ACCEPTABLY INSULATED FROM THE SUPPLY CIRCUIT.

NOTES:
 1. Resistor values are in ohms (k=kilo-ohms, M=megohms).
 2. Capacitor values are in microfarads (p=picofarads).
 3. Δ Parts marked with this sign are safety critical components. They must always be replaced with identical components-refer to the appropriate parts list and ensure exact replacement.

注意
 1. 抵抗の単位はΩ (k=kΩ, M=MΩ) です。
 2. コンデンサの単位はμF (p=pF) です。
 3. Δ マークのある部品は安全規格重要部品です。交換するときは必ずテック指定の部品を使用してください。